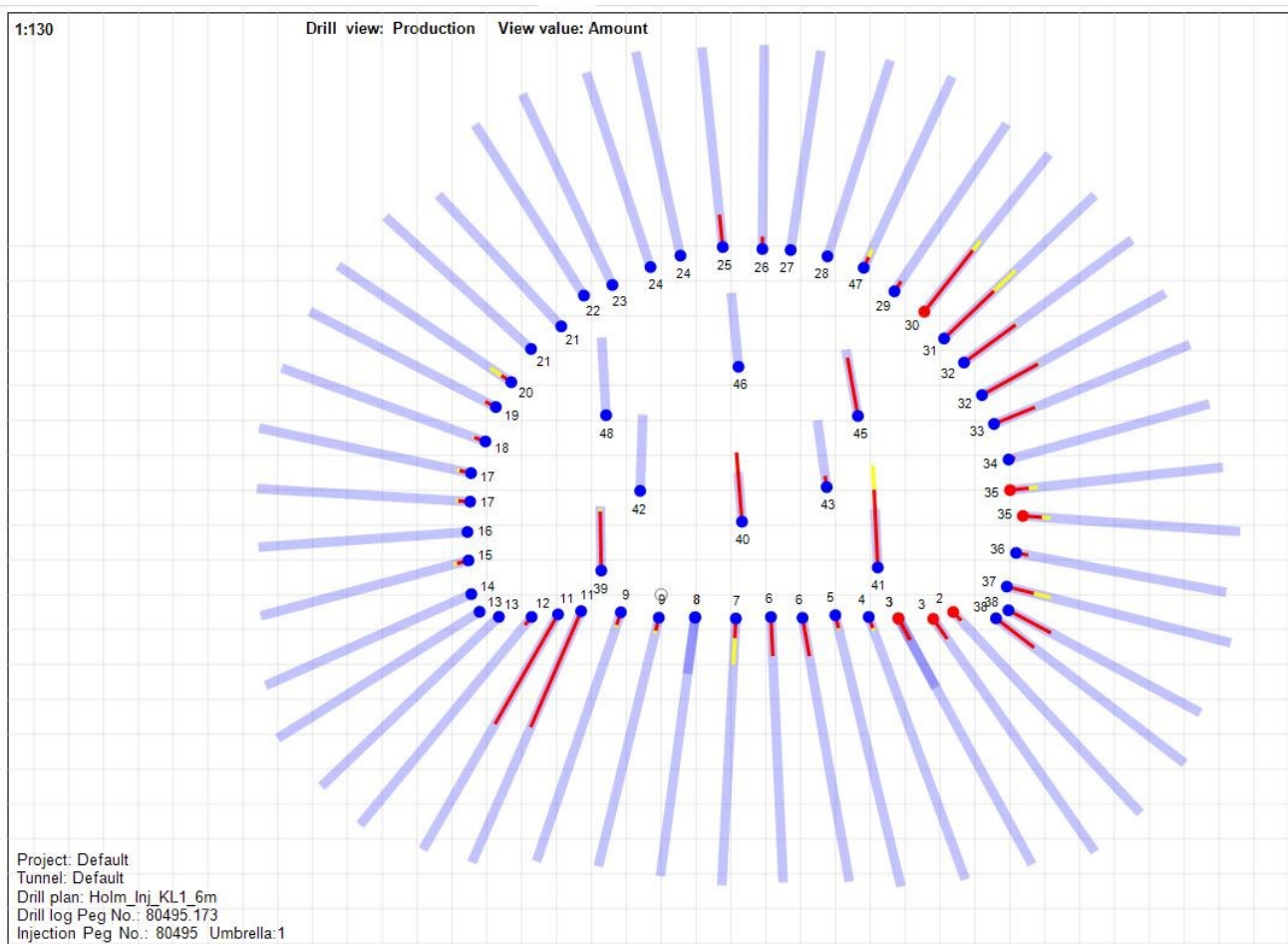


Bever Team Grouting Module

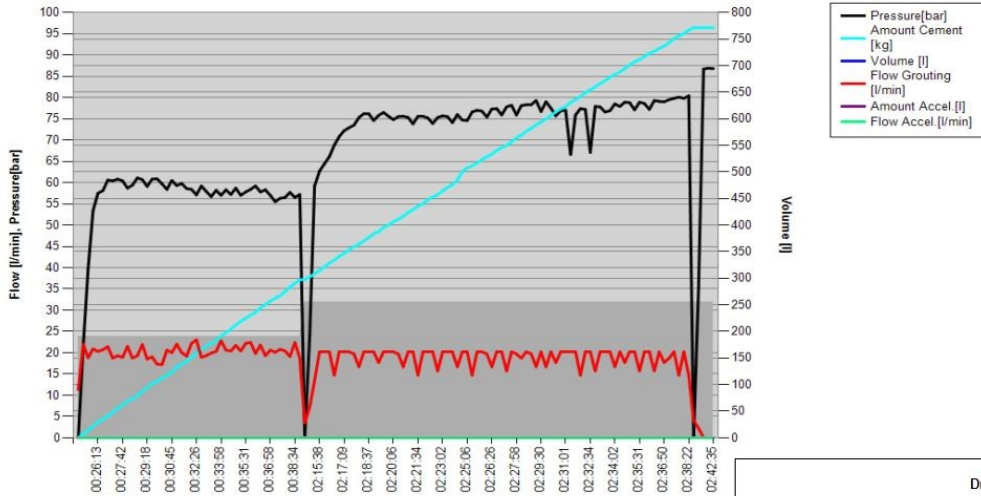
Reporting software that makes sense of all your grouting data

The grouting module can import data from AMV and Atlas Copco's grouting rigs. With the help of numerical and graphical presentation of logged data, important rock support information is properly described for as-built documentation. The gathered data can also be used to analyze and improve the grouting process for the next rounds.



Overview of the drilled round, imported from the drill log of the jumbo.
The red and yellow represent the amounts of the different grouting recipes.

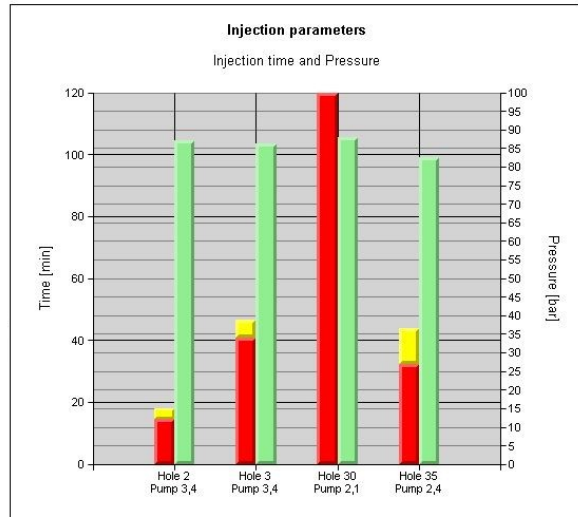
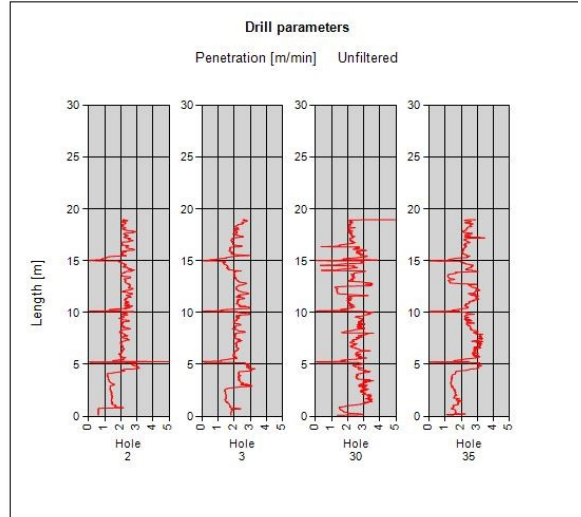
Hole No.:1 Pump No.:3, 4



See the log for each individual hole

Penetration rate imported from the MWD log of the drill rig

Green bars show obtained end pressure of the grouting in that hole, red and yellow show the different recipes of grout and the amounts used in the chosen hole.



Bever Control Story

Norwegian contractors introduced the concept of computer controlled drilling as early as 1979 when the first AMV computer controlled jumbo was set in operation. Bever Control is the pioneer company for this technology world wide. We have delivered our system to more than 140 drill rigs and has set the standard for the performance of computer controlled drilling rigs system.